

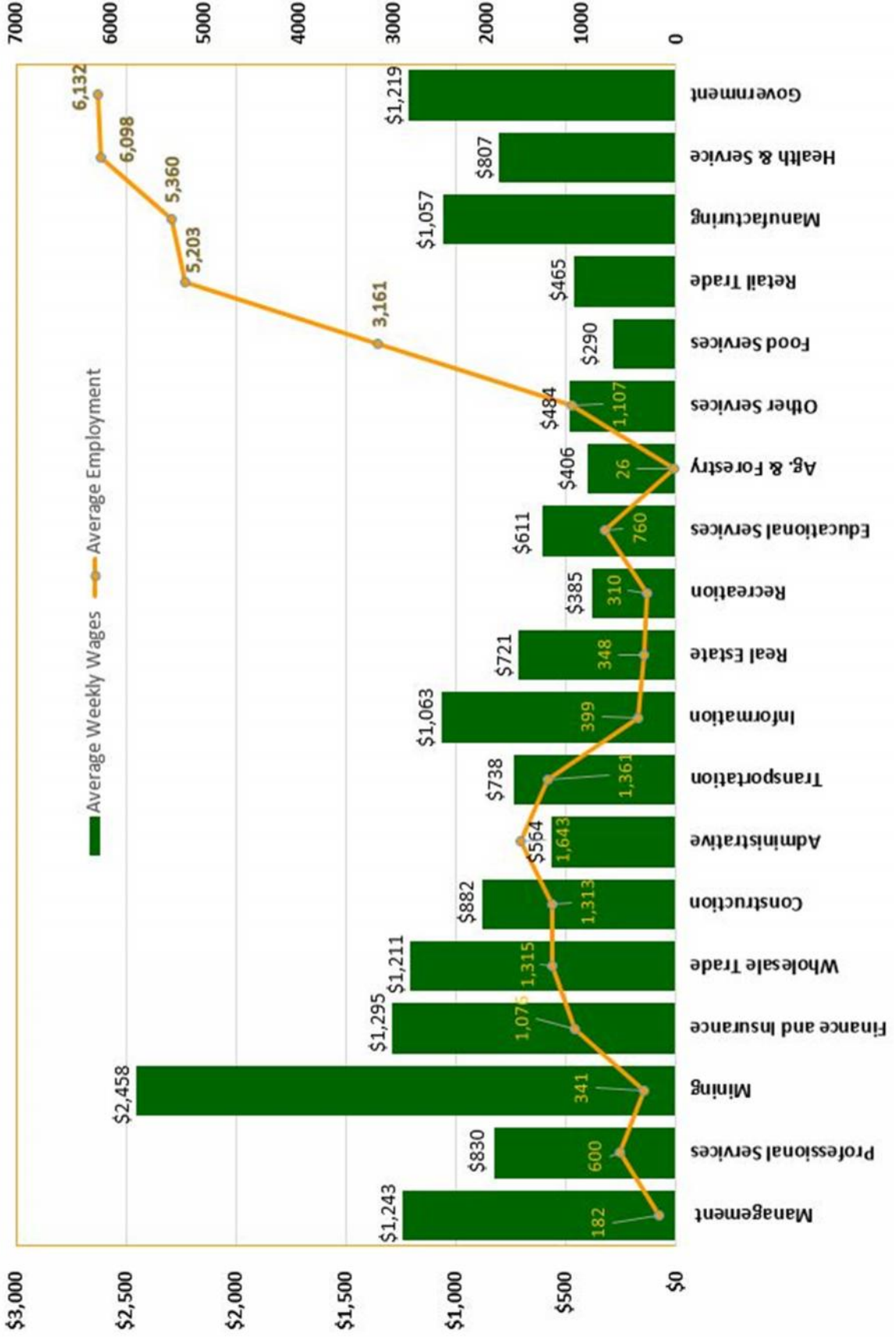


Chemung County Economic Profile For the 2016 CEDS

Applicants and Openings for June 2015

OCCUPATIONAL CATEGORY	APPLICANTS	OPENINGS	RATIO OF APPLICANTS TO OPENINGS
Management	119	27	4:1
Business and Financial Operations	56	6	9:1
Computer and Mathematical	49	6	8:1
Architecture and Engineering	35	29	1:1
Life, Physical, and Social Science	7	4	2:1
Community and Social Services	89	21	4:1
Legal	6	0	No Openings
Education, Training, and Library	42	0	No Openings
Arts, Design, Entertainment, Sports, and Media	42	6	7:1
Healthcare Practitioner and Technical	34	25	1:1
Healthcare Support	74	15	5:1
Protective Service	43	3	14:1
Food Preparation and Serving Related	404	12	34:1
Building and Grounds Cleaning and Maintenance	182	15	12:1
Personal Care, Personal Service, and Gaming	72	9	8:1
Sales and Related	389	94	4:1
Office, Clerical and Secretarial	715	72	10:1
Farming, Fishing, and Forestry	8	0	No Openings
Construction and Extraction	262	47	6:1
Installation, Maintenance, and Repair	148	26	6:1
Production	648	42	15:1
Transportation and Material Moving	442	52	9:1

Average Weekly Wages and Employment by Industry
Chemung County Q2 2015



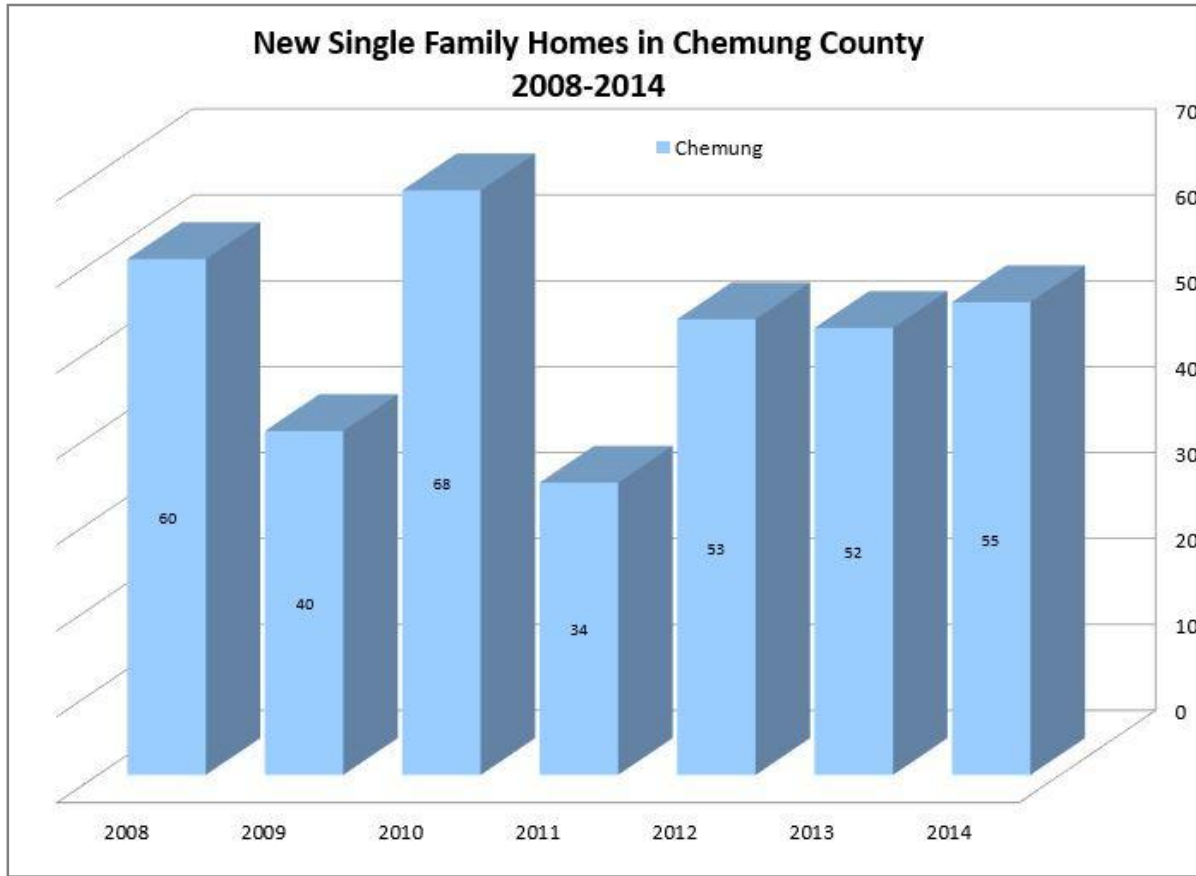
CHEMUNG MAJOR EMPLOYERS	EMPLOYEES
Access Midstream	100
American Customer Care	250
Anchor Glass Container	300
Arnot Health	2,300
CAF USA	400
Cameron Manufacturing and Design	235
Chemung Canal Trust	300
Corning Incorporated	225
Cutler-Hammer	325
CVS Distribution Center	550
Dalrymple Gravel and Contracting	200
DeMet's Candy Company	250
DePuy Synthes	400
Eaton Electrical	275
Elcor Health Services	250
Elmira College	300
Elmira Savings Bank	125
Emhart Glass	115
General Revenue Corporation	325
Guthrie Health Care	150
Hardinge Inc.	590
Hilliard Corporation	600
Hunt Engineers	100
F.M. Howell & Company	350
Kennedy Valve (McWane Inc.)	350
NYSEG	175
Schlumberger	300
Southern Tier Custom Fabricators	170
Swift Glass	100
Tops Markets	200
Travelers Insurance	190
Trayer Products	120
Verizon	175
Vulcraft of NY, Inc.	325
Walmart	225
Wegmans	160

STEBEN MAJOR EMPLOYERS	EMPLOYEES
Absolut Care at Three Rivers	150
Alstom	575
Arc of Steuben	353
Bath Veterans Administration	754
Corning Credit Union	240
Corning Hospital	709
Corning Incorporated	5146
Crowley Foods/HP Hood	130
Dresser-Rand/Siemens	590
Gunlocke Co., Inc.	700
Guthrie Medical Group, P.C.	296
Ira Davenport Hospital/Arnot Health	295
Kraft-Heinz	385
Mercury Aircraft	175
Pathways	675
Sitel	300
St. James Mercy Hospital	305
Wegmans	460
World Kitchen	557

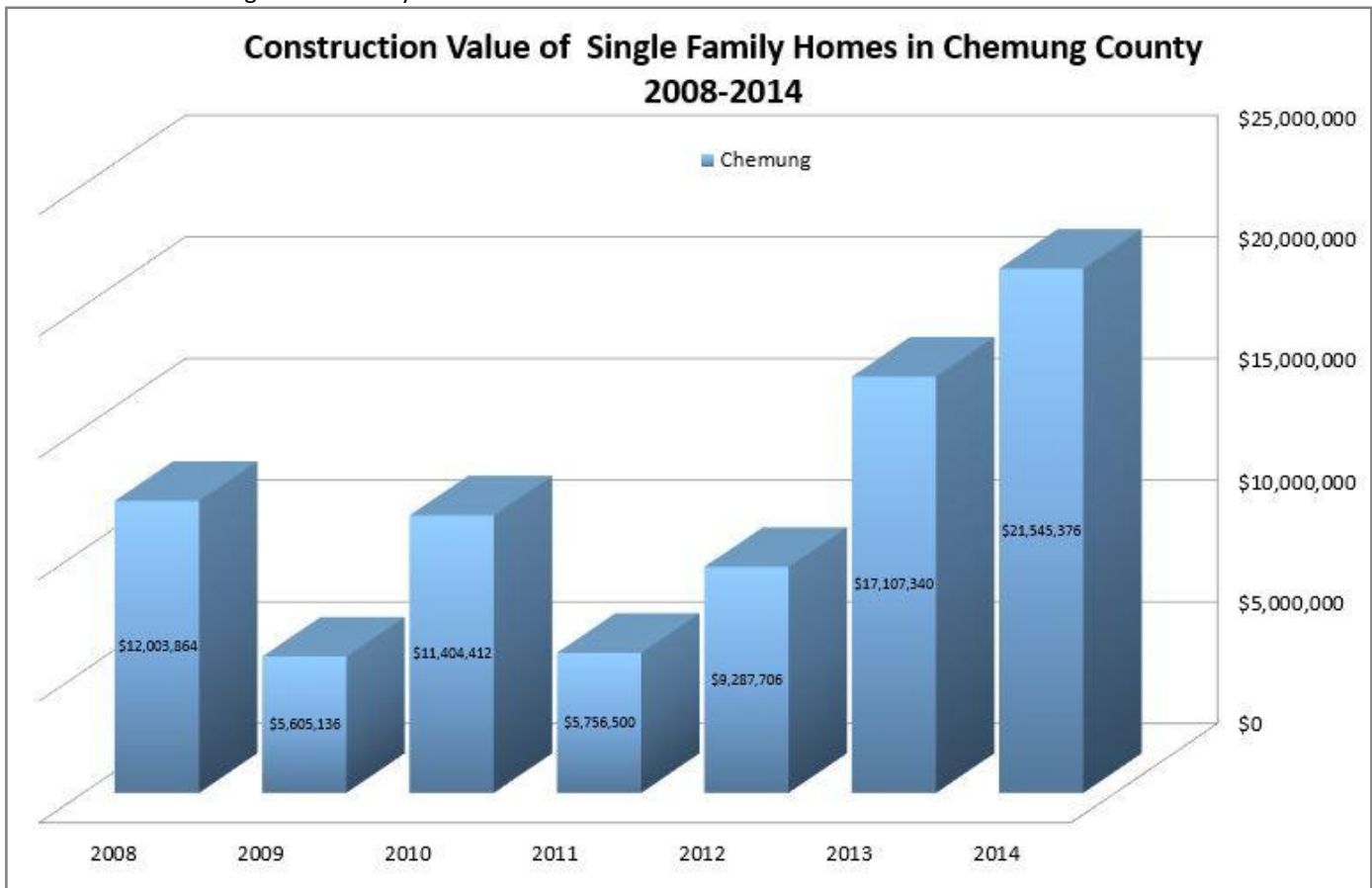
SCHUYLER MAJOR EMPLOYERS	EMPLOYEES
BMS	37
Cargill	111
Hazlitt 1852 Vineyards	39
Harbor Hotel	128
Schuyler Hospital	435
US Salt	127
Wagner Hardwoods	90
WalMart	243
Watkins Glen International	86
Welliver McGuire	77
Wine & Glass Tours	100
Parmenter Motors	85

Data collected in 2015 & 2016
by SCIDA, STEG, and SCOPED

New Housing Units

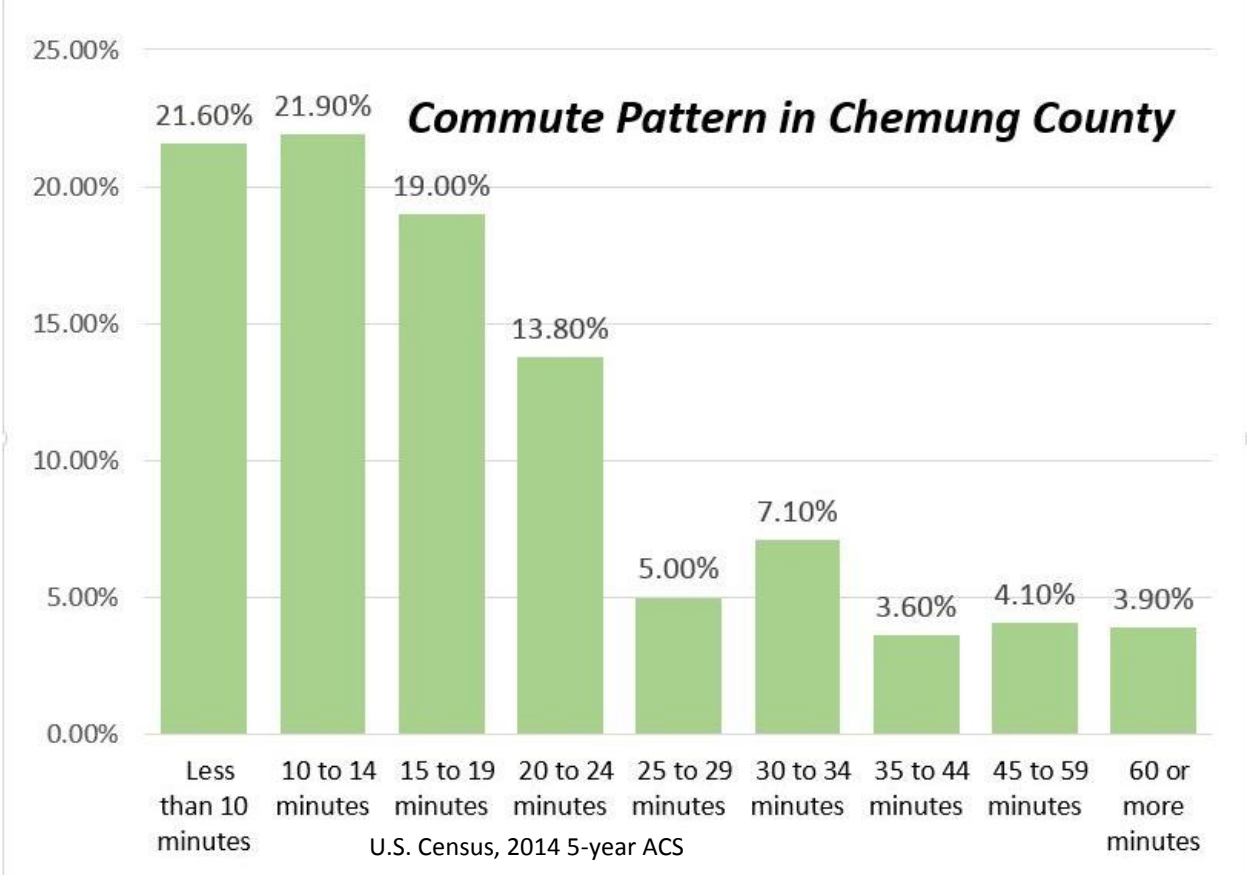


U.S. Census: Building Permit Survey 2008-2014

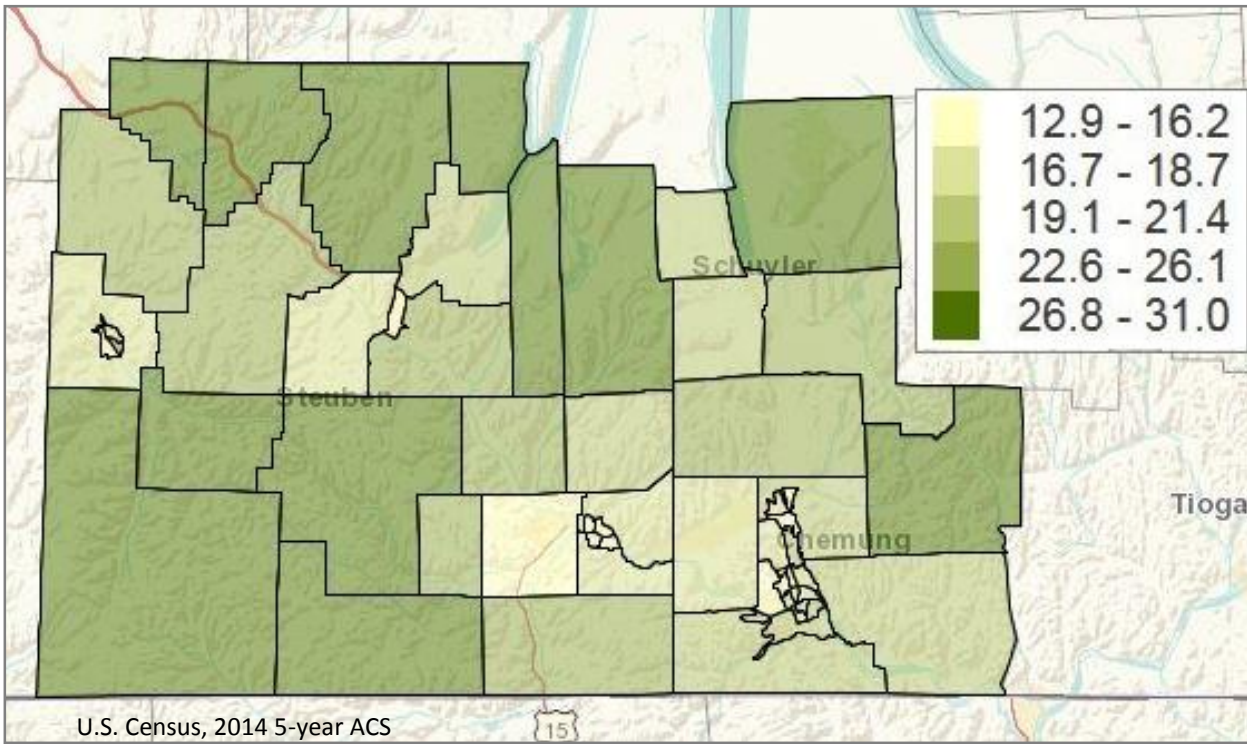


U.S. Census: Building Permit Survey 2008-2014

Transportation & Travel

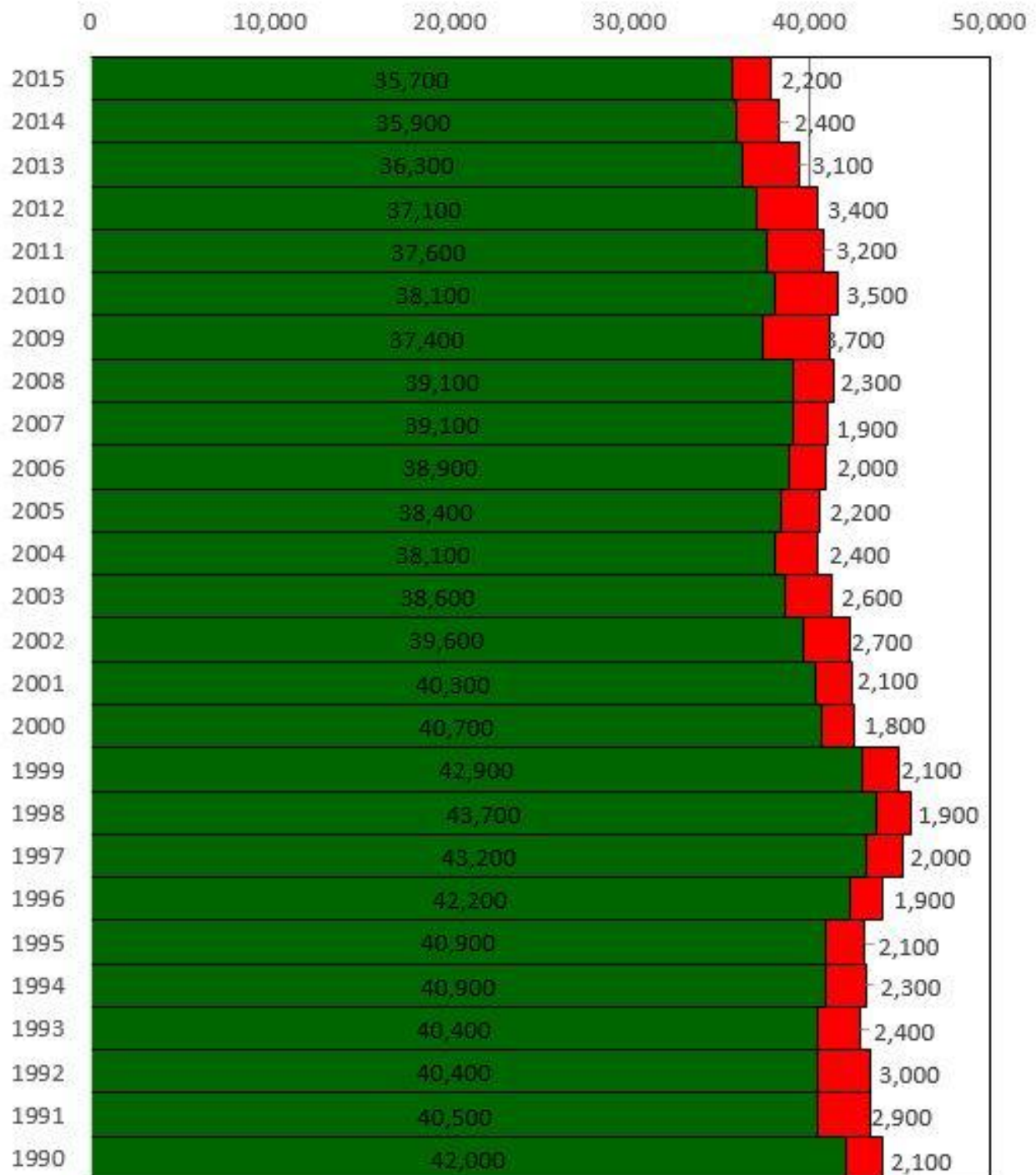


Average Commute in Minutes by Census Tract



Workforce Totals Chemung County

■ EMPLOYED ■ UNEMPLOYED



Source: NYS DOL LAUS

For additional information, contact:

Victoria Ehlen
 Economic Development Coordinator
 economicdevelopment@stny.rr.com
 Phone: (607) 962-5092
 Fax: (607) 962-3400

STCRPDB
 8 Denison Parkway East
 Suite 310
 Corning, NY 14830
www.stcplanning.org