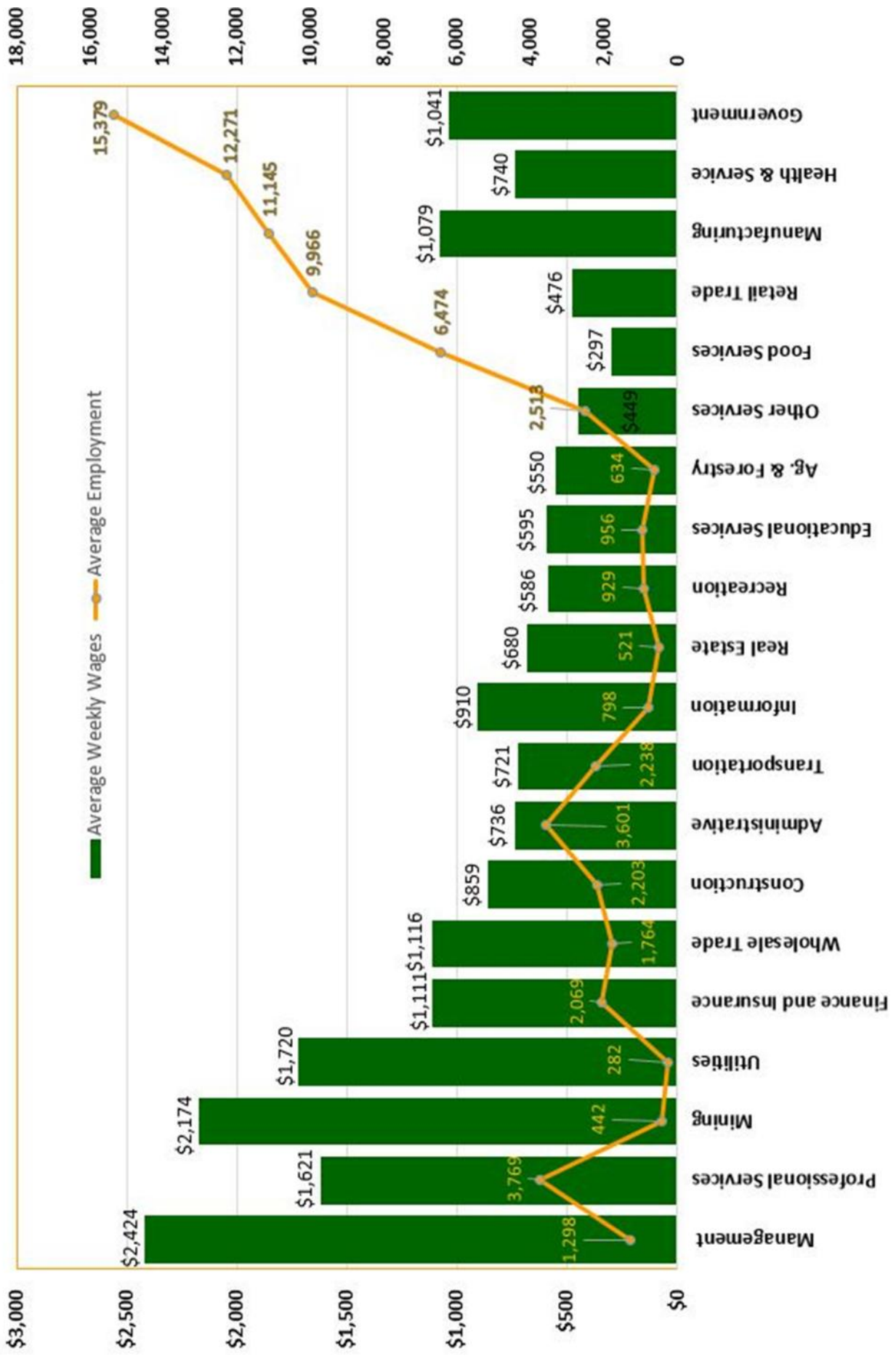


Regional Economic Profile For the 2016 CEDS

Applicants and Openings for June 2015

OCCUPATIONAL CATEGORY	APPLICANTS	OPENINGS	RATIO OF APPLICANTS TO OPENINGS
Management	300	66	5:1
Business and Financial Operations	110	36	3:1
Computer and Mathematical	96	60	2:1
Architecture and Engineering	98	99	1:1
Life, Physical, and Social Science	25	17	1:1
Community and Social Services	157	44	4:1
Legal	9	1	9:1
Education, Training, and Library	110	7	16:1
Arts, Design, Entertainment, Sports, and Media	80	17	5:1
Healthcare Practitioner and Technical	109	85	1:1
Healthcare Support	184	30	6:1
Protective Service	83	11	8:1
Food Preparation and Serving Related	782	28	28:1
Building and Grounds Cleaning and Maintenance	374	29	13:1
Personal Care, Personal Service, and Gaming	151	23	7:1
Sales and Related	804	133	6:1
Office, Clerical and Secretarial	1,408	108	13:1
Farming, Fishing, and Forestry	37	3	12:1
Construction and Extraction	570	61	9:1
Installation, Maintenance, and Repair	364	75	5:1
Production	1,363	55	25:1
Transportation and Material Moving	827	89	9:1

Average Weekly Wages and Employment by Industry STC Region Q2 2015



CHEMUNG MAJOR EMPLOYERS	EMPLOYEES
Access Midstream	100
American Customer Care	250
Anchor Glass Container	300
Arnot Health	2,300
CAF USA	400
Cameron Manufacturing and Design	235
Chemung Canal Trust	300
Corning Incorporated	100
Cutler-Hammer	325
CVS Distribution Center	550
Dalrymple Gravel and Contracting	200
DeMet's Candy Company	250
DePuy Synthes	400
Eaton Electrical	275
Elcor Health Services	250
Elmira College	300
Elmira Savings Bank	125
Emhart Glass	115
General Revenue Corporation	325
Guthrie Health Care	150
Hardinge Inc.	590
Hilliard Corporation	600
Hunt Engineers	100
F.M. Howell & Company	350
Kennedy Valve (McWane Inc.)	350
NYSEG	175
Schlumberger	300
Southern Tier Custom Fabricators	170
Swift Glass	100
Tops Markets	200
Travelers Insurance	190
Trayer Products	120
Verison	175
Vulcraft of NY, Inc.	325
Walmart	225
Wegmans	160

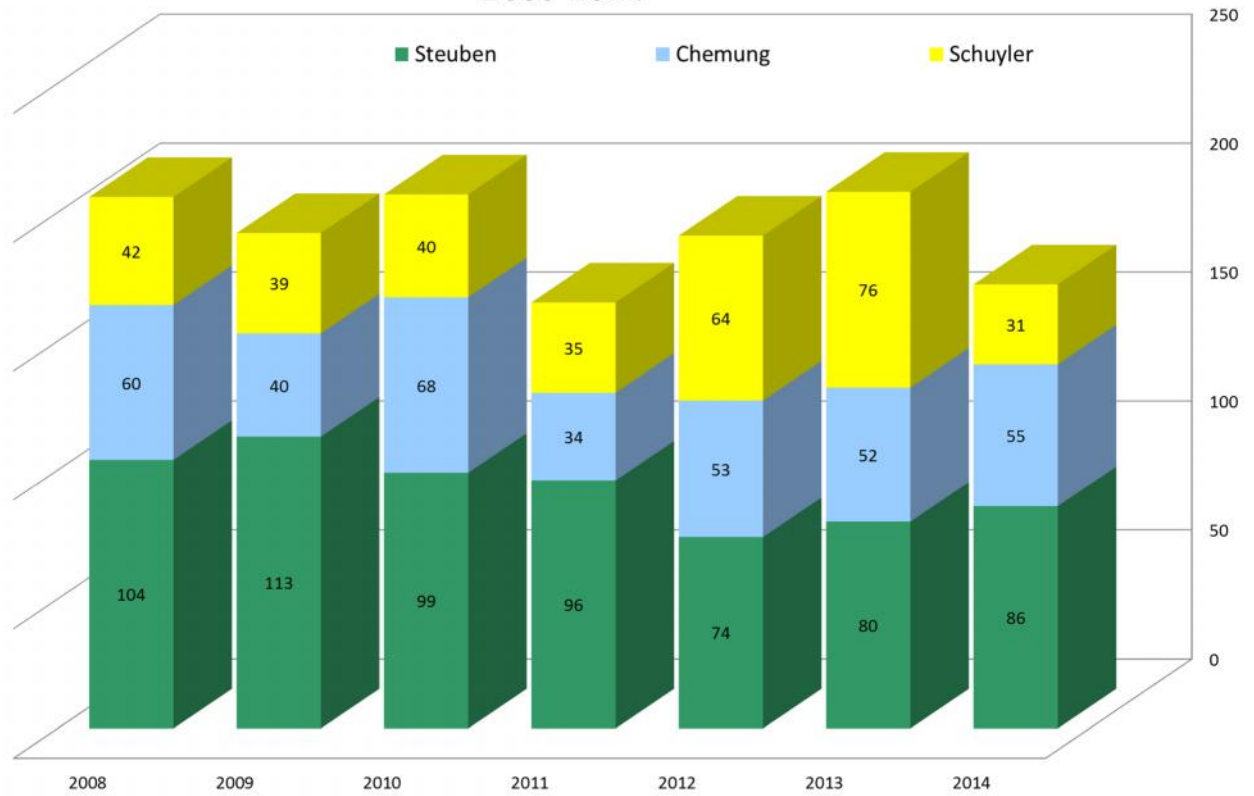
STEBEN MAJOR EMPLOYERS	EMPLOYEES
Absolut Care at Three Rivers	135
Alstom	400
ARC of Steuben	400
Bully Hill Vineyards	50
Corning Hospital	640
Corning Incorporated	5,100
Crowley Foods, Inc.	130
Dresser-Rand Company	500
Founders Pavilion	203
Gunlocke Co., Inc.	750
Ira Davenport Hospital	297
Kraft Foods (formerly Polly-o)	550
Mercury Aircraft	250
Pathways	610
Sitel	150
Storflex Fixtures	135
St. James Mercy Hospital	200
Guthrie Medical Group, P.C. In Steuben	225
Wegman's	525
World Kitchen	600

SCHUYLER MAJOR EMPLOYERS	EMPLOYEES
BMS	37
Cargill	111
Hazlitt 1852 Vineyards	39
Harbor Hotel	128
Schuyler Hospital	435
US Salt	127
Wagner Hardwoods	90
WalMart	243
Watkins Glen International	86
Welliver McGuire	77
Wine & Glass Tours	100
Parmenter Motors	85

Data collected by SCIDA, STEG, and SCOPED

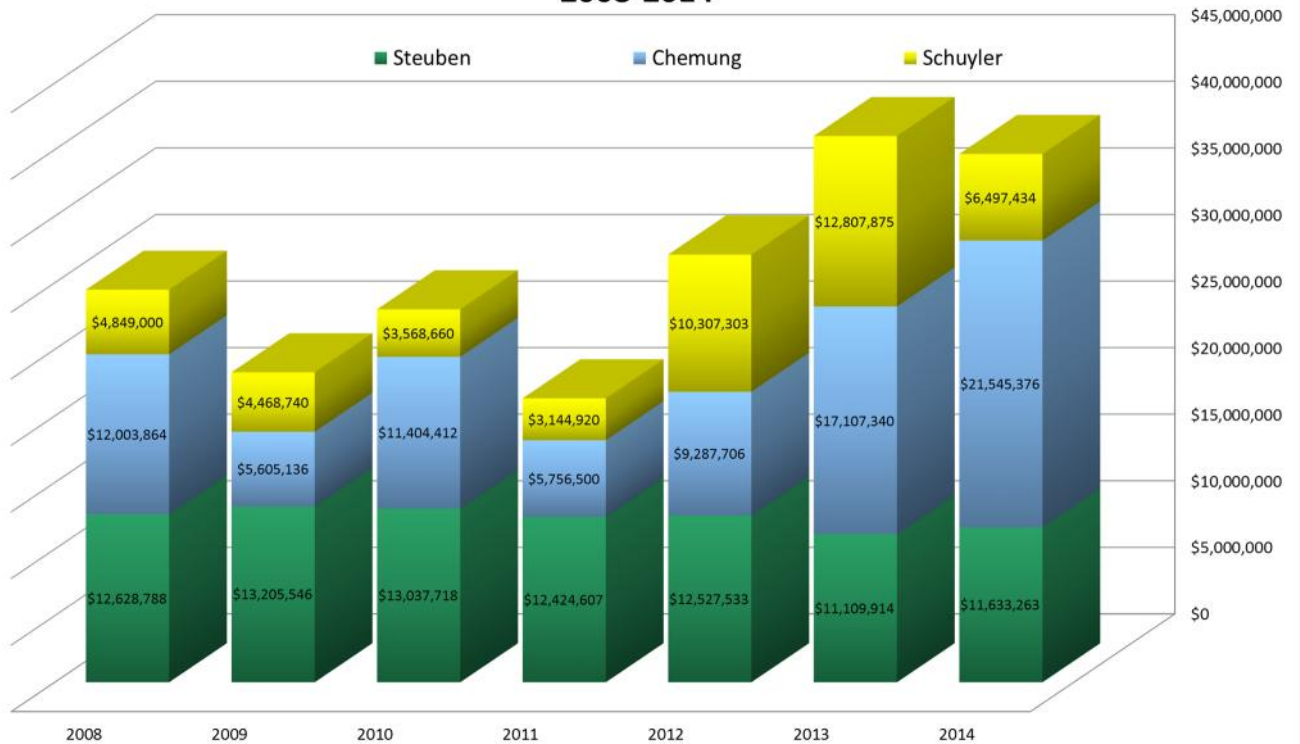
New Housing Units

New Single Family Homes in the STC Region 2008-2014



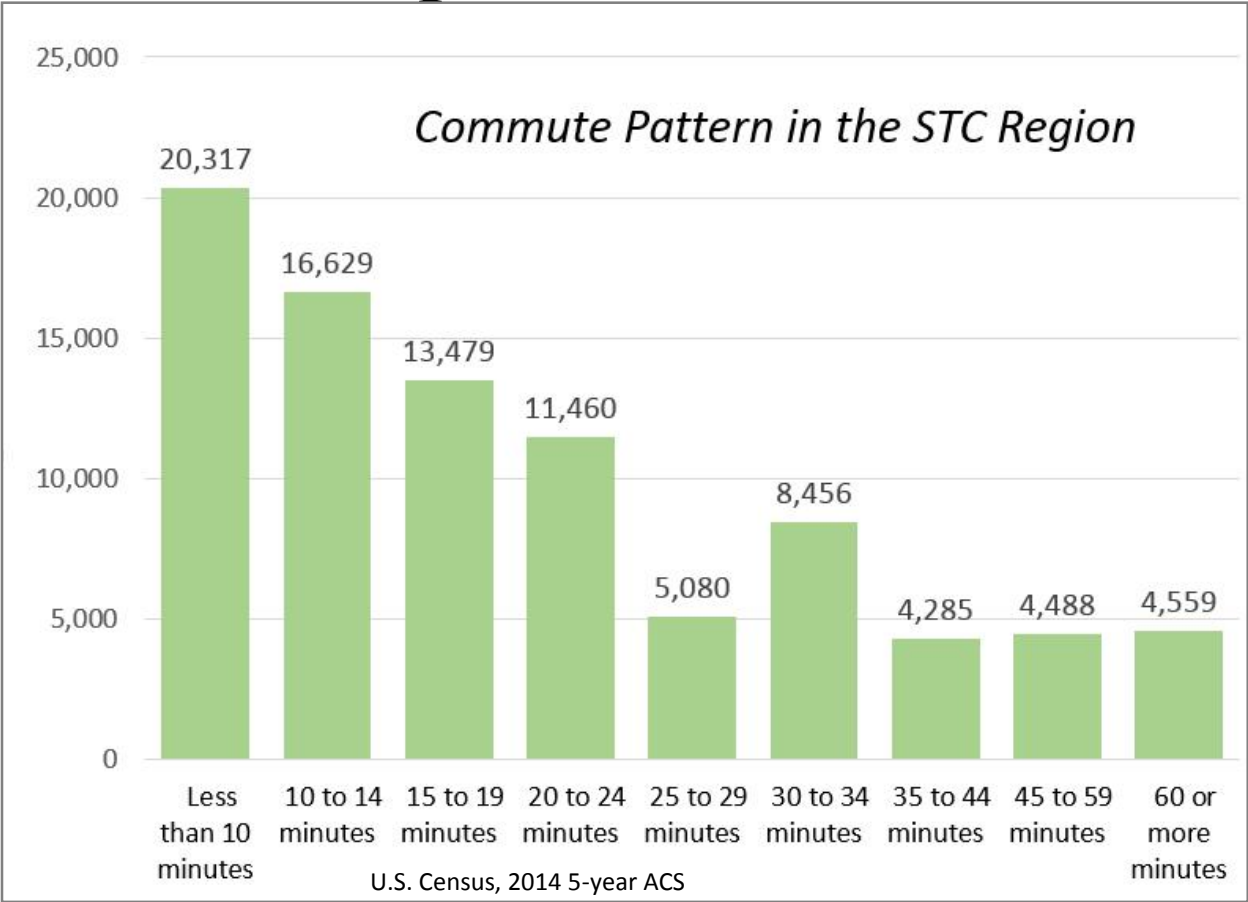
U.S. Census: Building Permit Survey 2008-2014

Construction Value of Single Family Homes in the STC Region 2008-2014

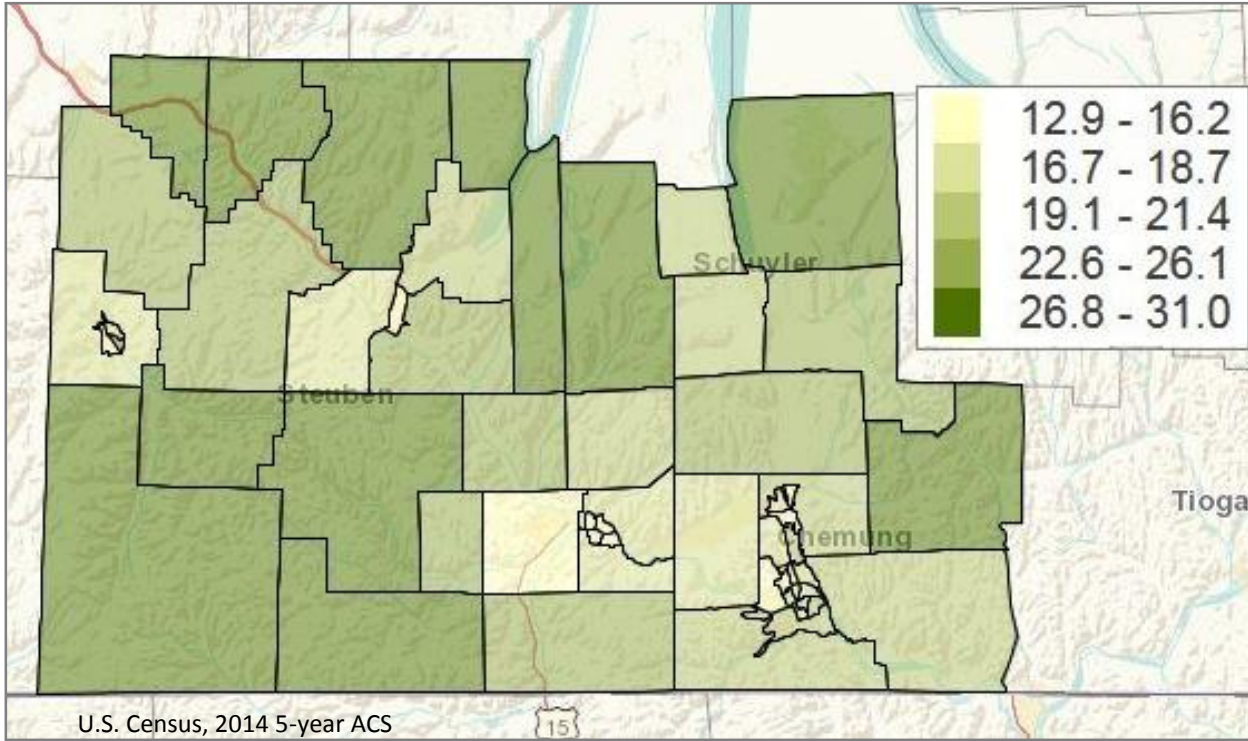


U.S. Census: Building Permit Survey 2008-2014

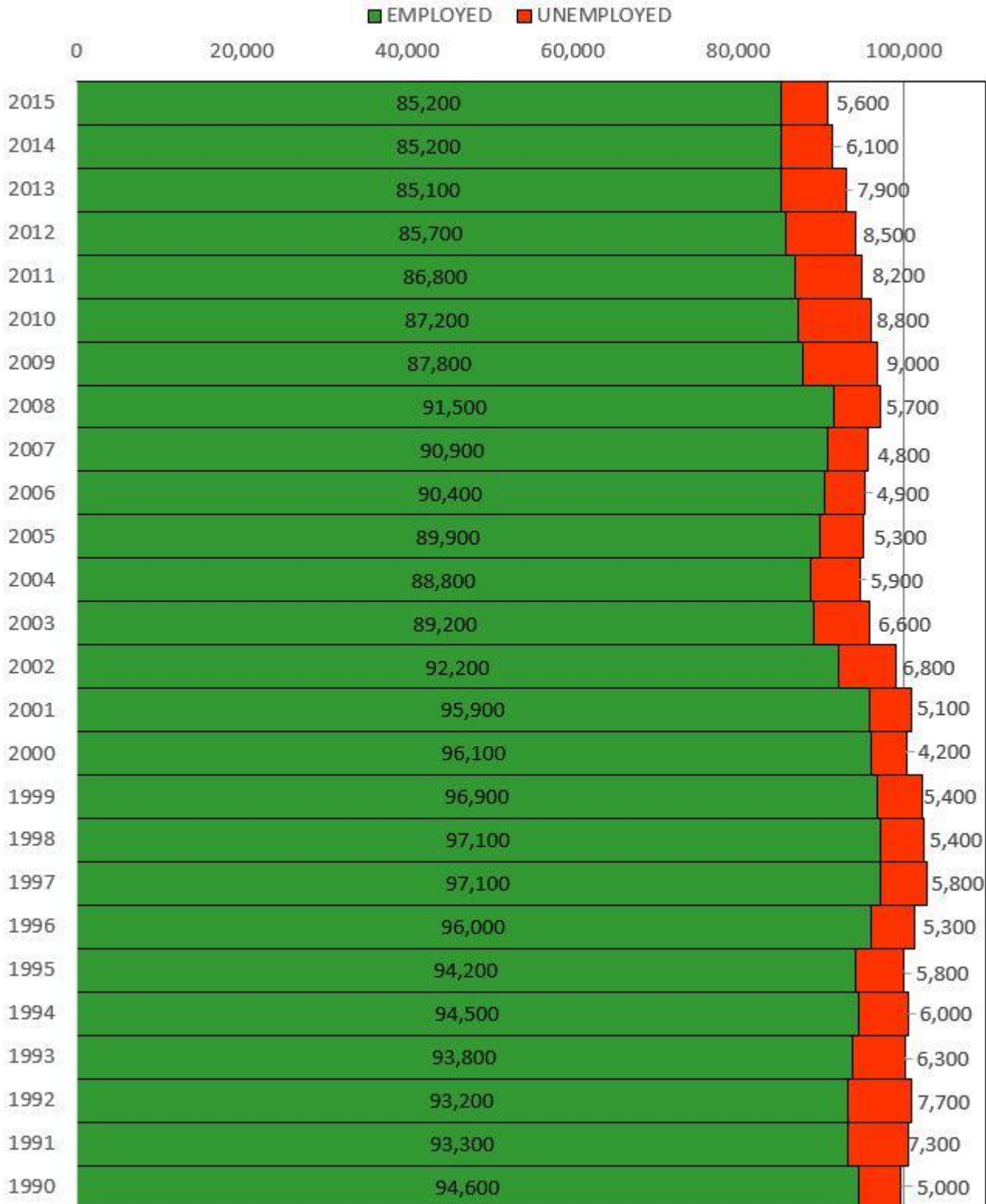
Transportation & Travel



Average Commute in Minutes by Census Tract



Workforce Totals Chemung, Schuyler, Steuben Counties



Source: NYS DOL LAUS

For additional information, contact:

Victoria Ehlen
 Economic Development Coordinator
 economicdevelopment@stny.rr.com
 Phone: (607) 962-5092

STCRPDB
 8 Denison Parkway East
 Suite 310
 Corning, NY 14830