

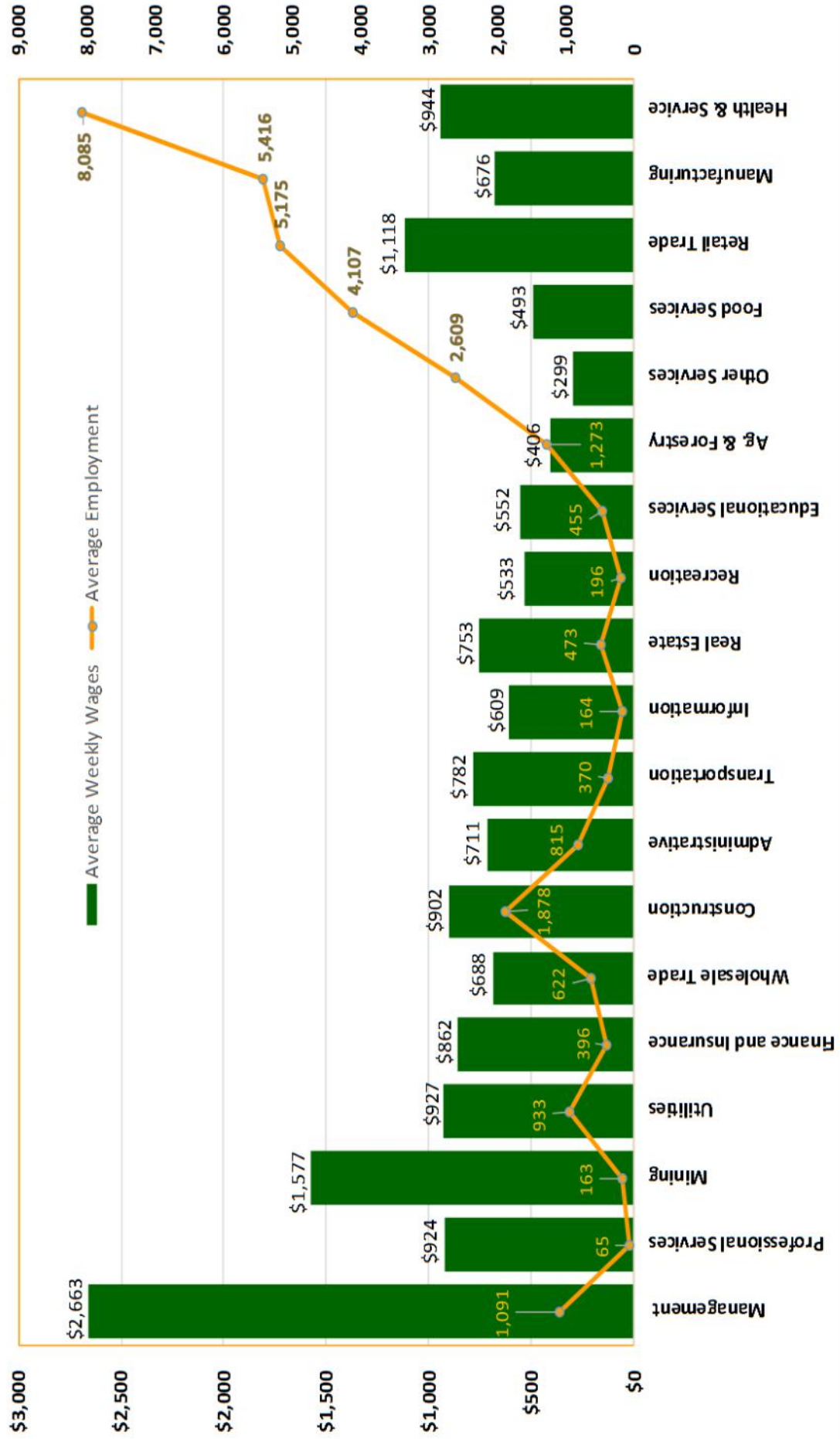


## Steuben County Economic Profile For the 2016 CEDS

### Applicants and Openings for June 2015

OCCUPATIONAL CATEGORY	APPLICANTS	OPENINGS	RATIO OF APPLICANTS TO OPENINGS
Management	161	39	4:1
Business and Financial Operations	49	30	2:1
Computer and Mathematical	44	54	1:1
Architecture and Engineering	57	68	1:1
Life, Physical, and Social Science	15	12	1:1
Community and Social Services	61	22	3:1
Legal	2	1	2:1
Education, Training, and Library	62	5	12:1
Arts, Design, Entertainment, Sports, and Media	34	10	3:1
Healthcare Practitioner and Technical	73	51	1:1
Healthcare Support	100	14	7:1
Protective Service	37	7	5:1
Food Preparation and Serving Related	326	13	25:1
Building and Grounds Cleaning and Maintenance	168	4	42:1
Personal Care, Personal Service, and Gaming	67	14	5:1
Sales and Related	369	39	9:1
Office, Clerical and Secretarial	605	35	17:1
Farming, Fishing, and Forestry	28	0	No Openings
Construction and Extraction	278	13	21:1
Installation, Maintenance, and Repair	197	49	4:1
Production	604	9	67:1
Transportation and Material Moving	329	26	13:1

**Average Weekly Wages and Employment by Industry  
Steuben County Q2 2015**



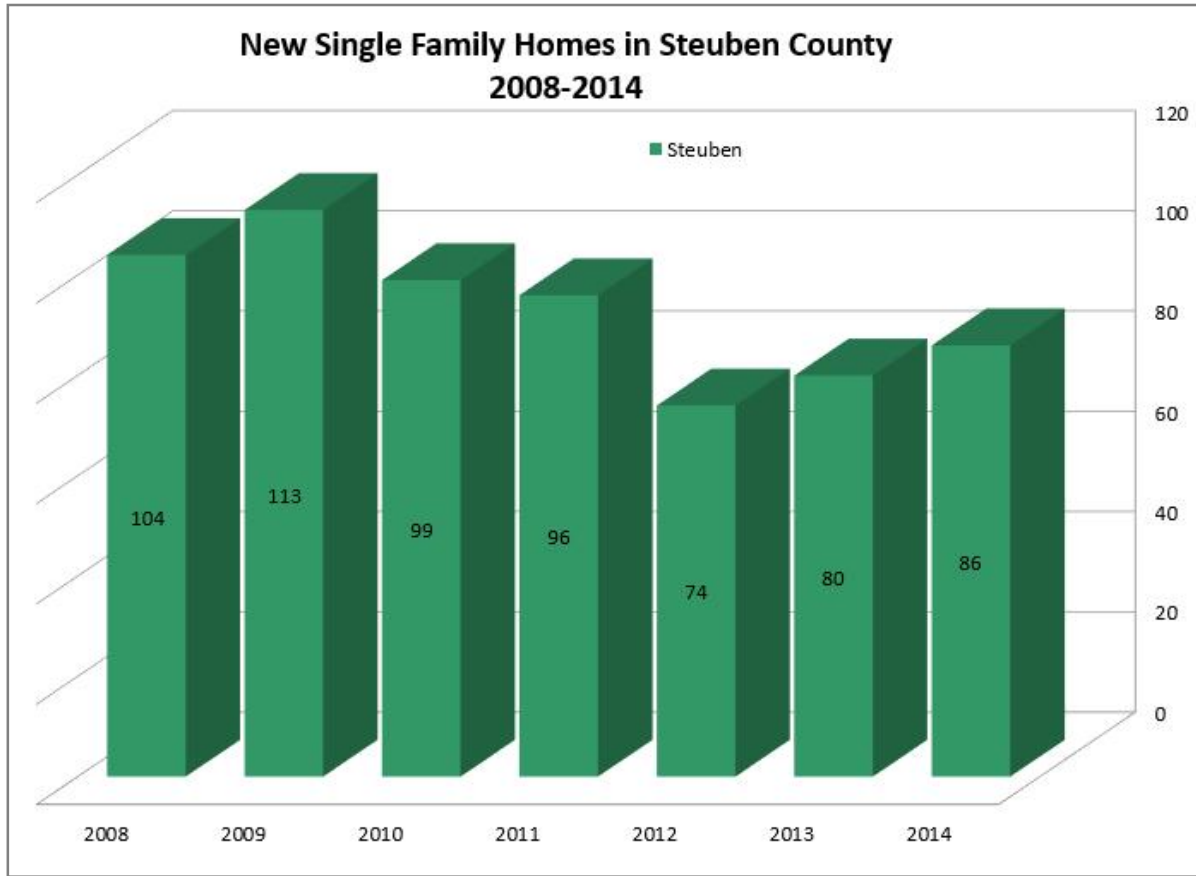
<b>CHEMUNG MAJOR EMPLOYERS</b>	<b>EMPLOYEES</b>
Access Midstream	100
American Customer Care	250
Anchor Glass Container	300
Arnot Health	2,300
CAF USA	400
Cameron Manufacturing and Design	235
Chemung Canal Trust	300
Corning Incorporated	225
Cutler-Hammer	325
CVS Distribution Center	550
Dalrymple Gravel and Contracting	200
DeMet's Candy Company	250
DePuy Synthes	400
Eaton Electrical	275
Elcor Health Services	250
Elmira College	300
Elmira Savings Bank	125
Emhart Glass	115
General Revenue Corporation	325
Guthrie Health Care	150
Hardinge Inc.	590
Hilliard Corporation	600
Hunt Engineers	100
F.M. Howell & Company	350
Kennedy Valve (McWane Inc.)	350
NYSEG	175
Schlumberger	300
Southern Tier Custom Fabricators	170
Swift Glass	100
Tops Markets	200
Travelers Insurance	190
Trayer Products	120
Verizon	175
Vulcraft of NY, Inc.	325
Walmart	225
Wegmans	160

<b>STEBEN MAJOR EMPLOYERS</b>	<b>EMPLOYEES</b>
Absolut Care at Three Rivers	150
Alstom	575
Arc of Steuben	353
Bath Veterans Administration	754
Corning Credit Union	240
Corning Hospital	709
Corning Incorporated	5146
Crowley Foods/HP Hood	130
Dresser-Rand/Siemens	590
Gunlocke Co., Inc.	700
Guthrie Medical Group, P.C.	296
Ira Davenport Hospital/Arnot Health	295
Kraft-Heinz	385
Mercury Aircraft	175
Pathways	675
Sitel	300
St. James Mercy Hospital	305
Wegmans	460
World Kitchen	557

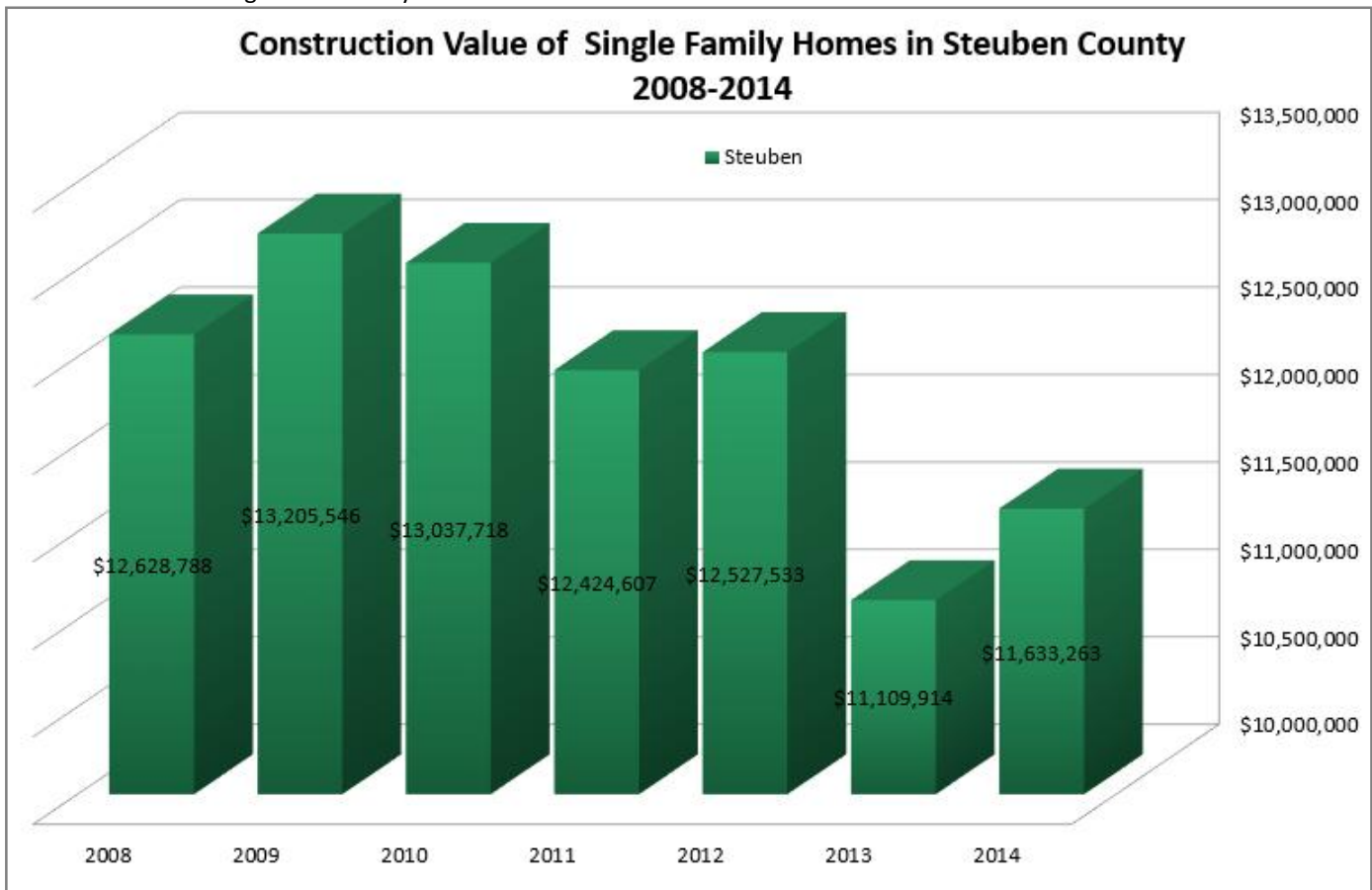
<b>SCHUYLER MAJOR EMPLOYERS</b>	<b>EMPLOYEES</b>
BMS	37
Cargill	111
Hazlitt 1852 Vineyards	39
Harbor Hotel	128
Schuyler Hospital	435
US Salt	127
Wagner Hardwoods	90
WalMart	243
Watkins Glen International	86
Welliver McGuire	77
Wine & Glass Tours	100
Parmenter Motors	85

Data collected in 2015 & 2016  
by SCIDA, STEG, and SCOPED

# New Housing Units

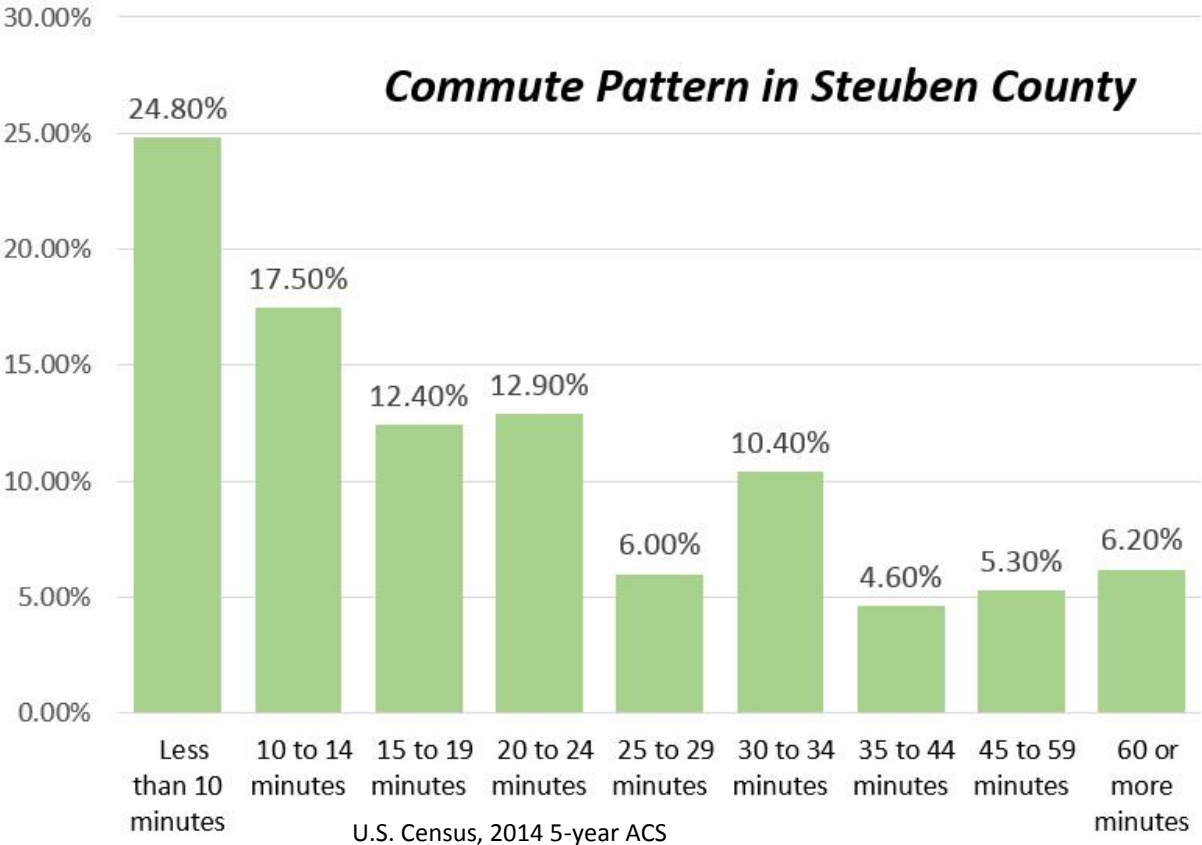


U.S. Census: Building Permit Survey 2008-2014

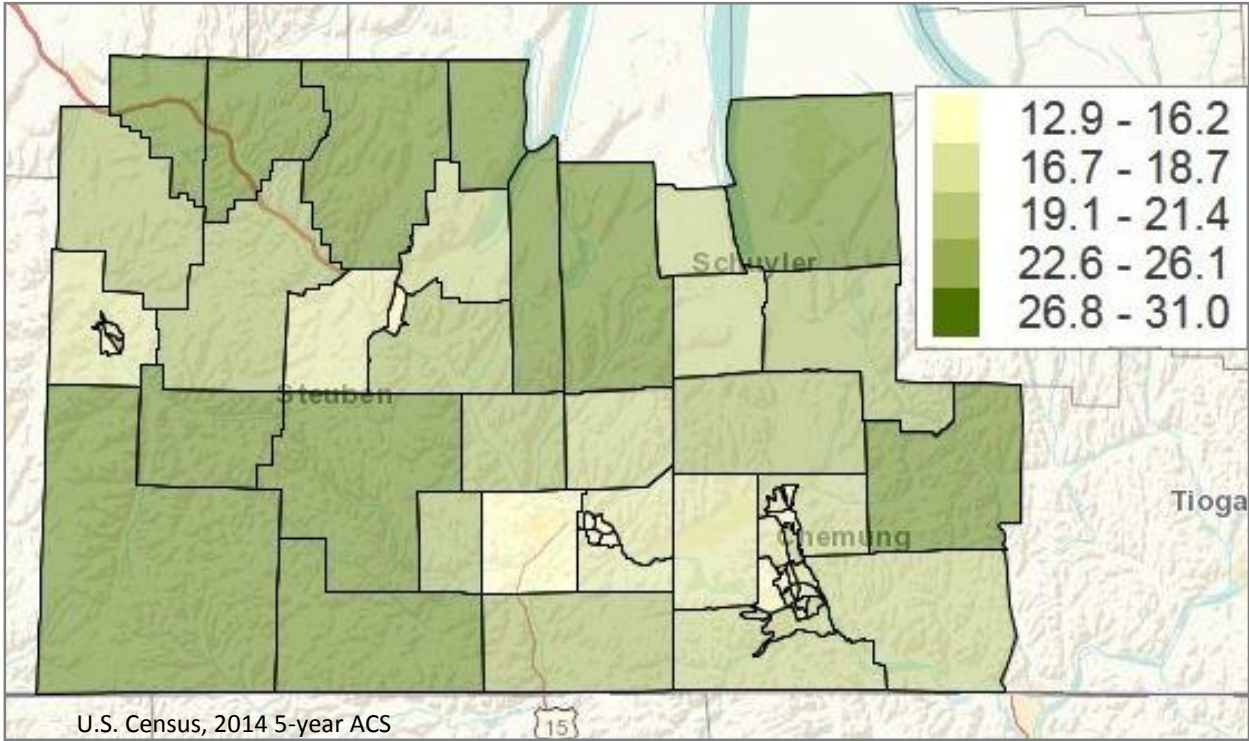


U.S. Census: Building Permit Survey 2008-2014

# Transportation & Travel

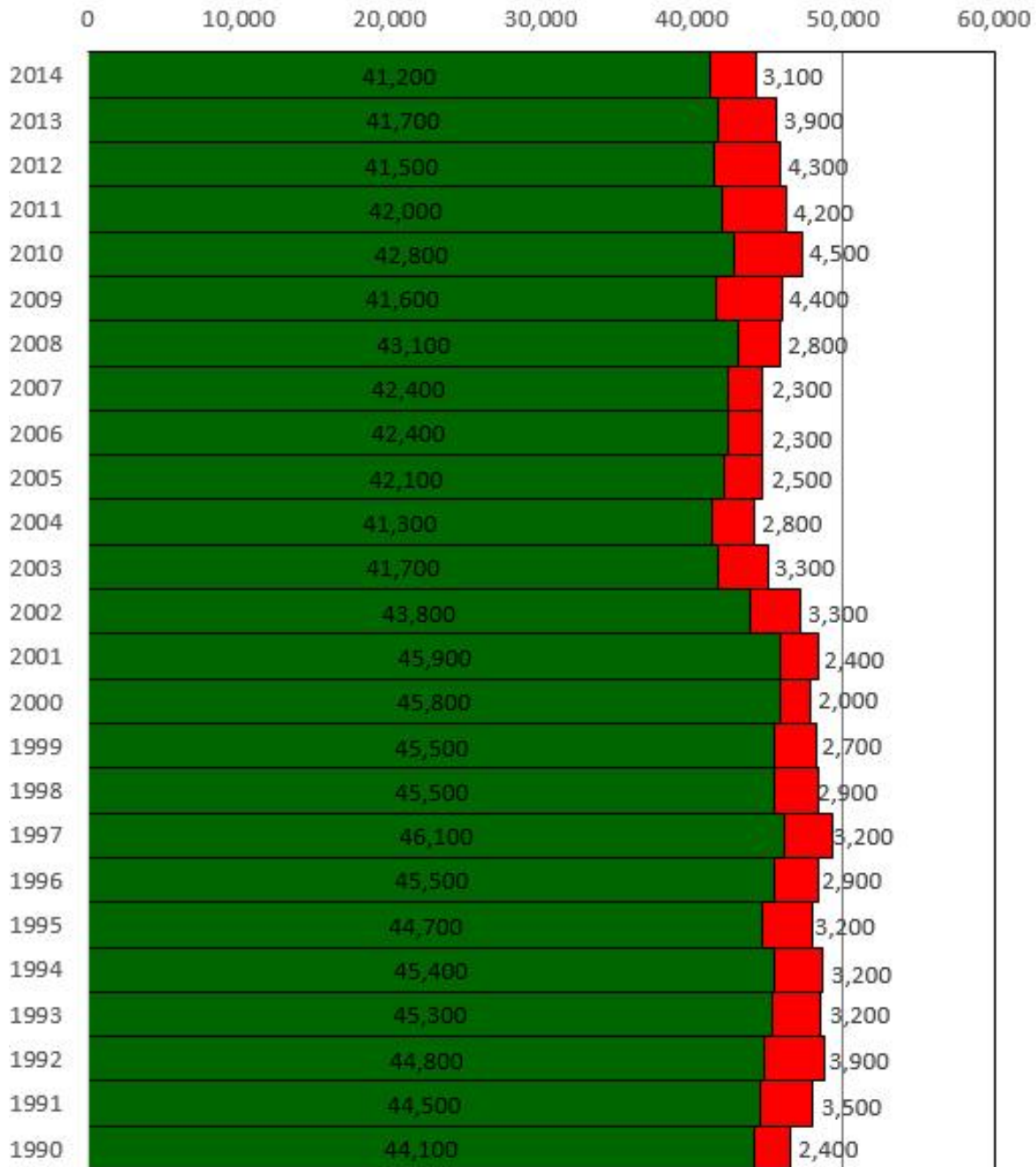


### Average Commute in Minutes by Census Tract



## Workforce Totals Steuben County

■ EMPLOYED ■ UNEMPLOYED



Source: NYS DOL LAUS

**For additional information, contact:**

Victoria Ehlen  
 Economic Development Coordinator  
 economicdevelopment@stny.rr.com  
 Phone: (607) 962-5092  
 Fax: (607) 962-3400

STCRPDB  
 8 Denison Parkway East  
 Suite 310  
 Corning, NY 14830  
[www.stcplanning.org](http://www.stcplanning.org)